

Infinite possibilities
ELTAS™



> Eltas Home

> What is Eltas ?

Applications

> Hygiene products

> Industrial materials

> Consumer products

> Agricultural materials

> Construction & civil engineering materials

The Eltas Performance series

> Waterproof

> Water-permeable

> Ultrafine-filament

> Bulky-filament

> High-uniformity

> Flat-filament

> Flexible

> Flame-resistant

> Contact us

PDF
[Full Page] → 

The Eltas brand spunbond synthetic continuous-filament nonwovens are the product of a unique range of technologies at Asahi Kasei Fibers.

Hygiene products



Industrial materials



Consumer products



Agricultural materials



Construction & civil engineering materials



Contact us



They are the world's only spunbond nonwovens available in all three key materials of nylon, polyester, and polypropylene, all featuring pure, binder-free webs with evenly distributed filaments joined by thermocompression bonding.

They boast impressive filament evenness (in punch density and fiber opening), air permeability, no napping, and edge fray resistance. In addition to normal spunbond nonwovens, **Eltas features a lineup of high-performance brands with specific additional features.** Our wide variety of products have a long track record of meeting diverse needs in fields of application ranging from hygiene products to industrial, construction, and civil engineering materials.

TOPICS

2012/12/19

The Eltas website has been redesigned.

Important: Consult Asahi Kasei Fibers Corporation before use in any food-, hygienic-, or medical-related application.
Eltas™ is a trademark or registered trademark of Asahi Kasei Fibers Corporation.



- > Eltas Home
- > What is Eltas ?

- Applications
- > Hygiene products
 - > Industrial materials
 - > Consumer products
 - > Agricultural materials
 - > Construction & civil engineering materials

- The Eltas Performance series
- > Waterproof
 - > Water-permeable
 - > Ultrafine-filament
 - > Bulky-filament
 - > High-uniformity
 - > Flat-filament
 - > Flexible
 - > Flame-resistant

- > Contact us

What is Eltas™ ?

The world's unique spunbond nonwoven available in three different materials

In addition to common features such as a high level of filament evenness (in punch density and fiber opening), air permeability, no napping, and edge fray resistance, the availability of nylon, polyester, and polypropylene provides an added dimension of variety to the Eltas™ brand, with different characteristics that meet practically any need in a broad array of applications in every field of industry.

Material characteristics

[Nylon]

- Superior dyeability
- High strength, superior processability
- Soft texture and good drape

[Polyester]

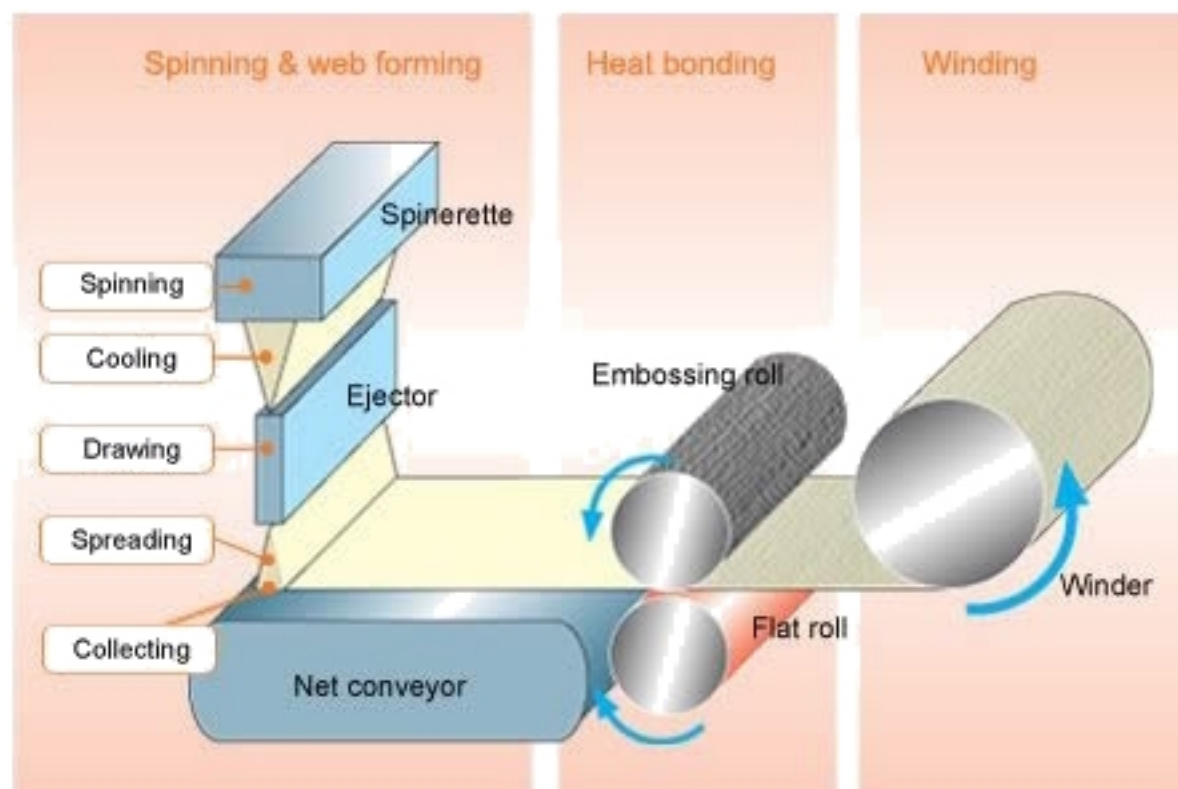
- Superior dimensional stability
- Superior heat and light resistance
- High strength and superior processability

[Polypropylene]

- Light-weight, high-volume, and high-bulk features
- Superior lipophilic properties
- Superior heat processability

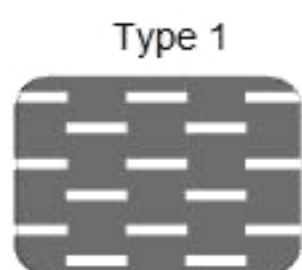
Production Process

Eltas is produced using the spunbond process.

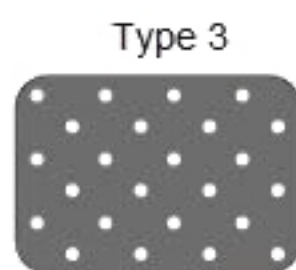


- Synthetic resins (polymers) are heated and melted, extruded through fine holes in the spinnerets, and drawn into continuous filaments. Next, webs of evenly distributed filaments are bonded by thermocompression with the embossing roll to form a bonded sheet.

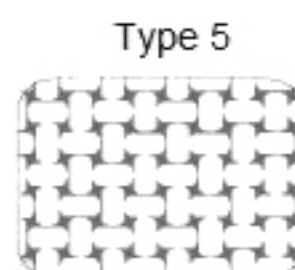
Emboss types



A soft, high-volume pattern of horizontal bars



A soft pattern of small dots



A strong, high-tension flat weave pattern

> Contact us

▲ Back to the top

Infinite possibilities
ELTASTM

> Eltas Home

> What is Eltas ?

Applications

> Hygiene products

> Industrial materials

> Consumer products

> Agricultural materials

> Construction & civil engineering materials

The Eltas Performance series

> Waterproof

> Water-permeable

> Ultrafine-filament

> Bulky-filament

> High-uniformity

> Flat-filament

> Flexible

> Flame-resistant

> Contact us

Applications

Hygiene products



Hygiene
products

Industrial
materials

Consumer
products

Agricultural
materials

Construction &
civil engineering
materials

Diapers (for infants and adults)



Used as material for the main portions of diapers for babies and for elderly users.

Sanitary products



Used as material for the main portions of sanitary napkins and as a packaging material for them.

Medical masks & anti-pollen masks



Used as mask surface material and in ear loops.

Medical gowns & surgical drapes



In growing demand as surface material for medical gowns and surgical drapes.

> Contact us

▲ Back to the top

Infinite possibilities
ELTAS™

> Eltas Home

> What is Eltas ?

Applications

> Hygiene products

> Industrial materials

> Consumer products

> Agricultural materials

> Construction & civil engineering materials

The Eltas Performance series

> Waterproof

> Water-permeable

> Ultrafine-filament

> Bulky-filament

> High-uniformity

> Flat-filament

> Flexible

> Flame-resistant

> Contact us

Applications

Industrial materials

Hygiene products

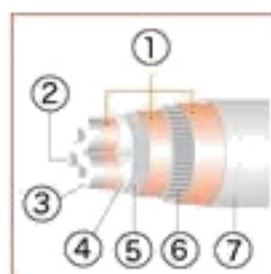
Industrial materials

Consumer products

Agricultural materials

Construction & civil engineering materials

Cable wrapping



Used as cable wraps.

1. Cable wrap
2. Conductor
3. Insulator
4. Sheath
5. Buffer
6. Armor
7. Sheath (jacket)

Automotive materials



Used in many different portions of automotive materials

[> To detail page](#)

Liquid filters



Used as filter media in liquid filters

[> To EUTEC page](#)

Slip sheet



Because Eltas products for use as slip sheet are pure PET continuous-filament nonwovens, they generate no paper fragments, leave no stains on the stainless steel surface, and are tear-resistant enabling repeated reuse.

Carwash brushes



Used in the brush portion of carwash brush modules

> Contact us

[▲ Back to the top](#)

Infinite possibilities
ELTASTM

> Eltas Home

> What is Eltas ?

Applications

> Hygiene products

> Industrial materials

> Consumer products

> Agricultural materials

> Construction &
civil engineering materials

The Eltas Performance series

> Waterproof

> Water-permeable

> Ultrafine-filament

> Bulky-filament

> High-uniformity

> Flat-filament

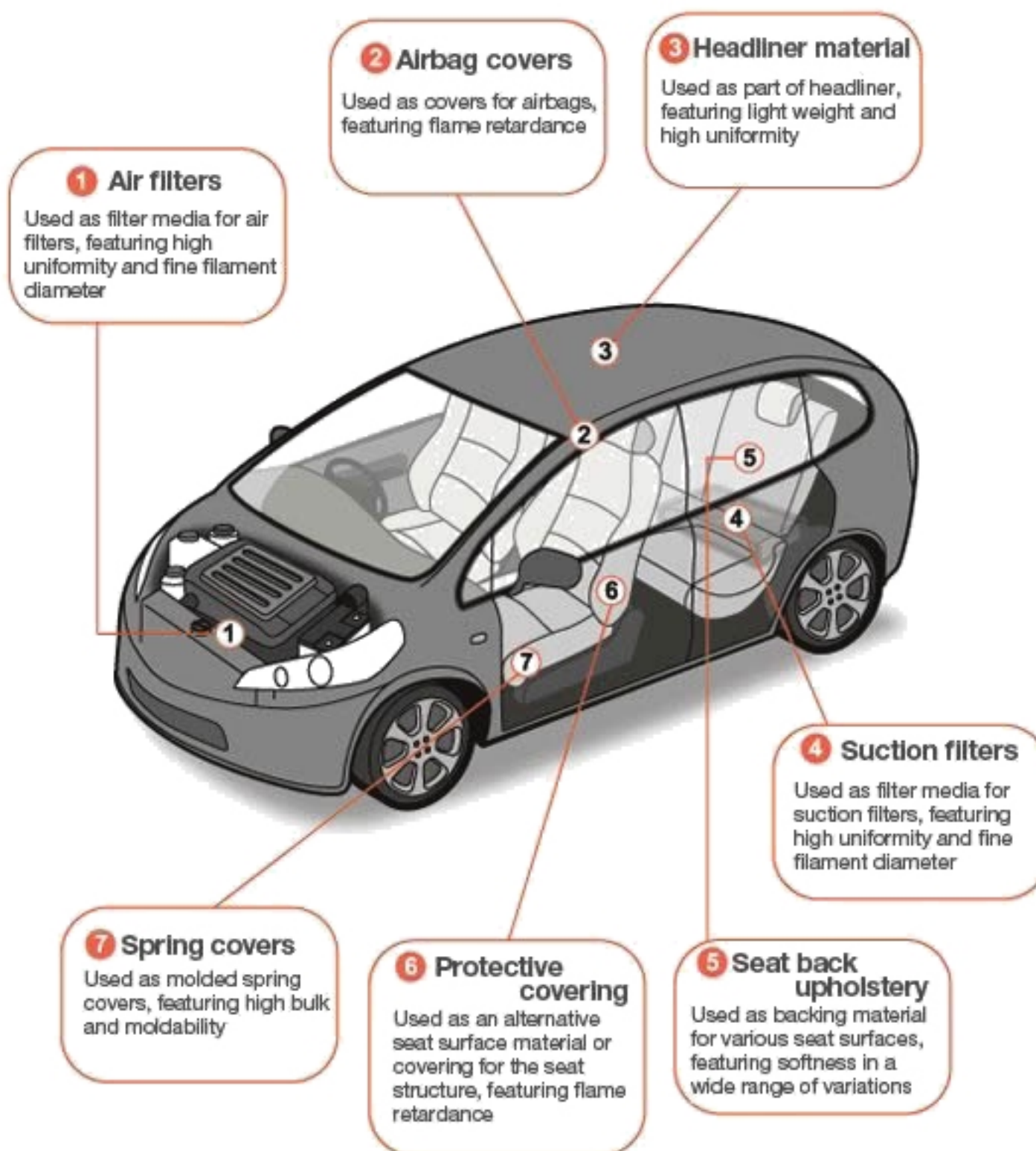
> Flexible

> Flame-resistant

> Contact us

Applications

Automotive materials: major applications



> Contact us

▲ Back to the top

Infinite possibilities
ELTAS™

[> Eltas Home](#)[> What is Eltas ?](#)

Applications

[> Hygiene products](#)[> Industrial materials](#)[> Consumer products](#)[> Agricultural materials](#)[> Construction & civil engineering materials](#)

The Eltas Performance series

[> Waterproof](#)[> Water-permeable](#)[> Ultrafine-filament](#)[> Bulky-filament](#)[> High-uniformity](#)[> Flat-filament](#)[> Flexible](#)[> Flame-resistant](#)[> Contact us](#)

Applications

Consumer products

[Hygiene products](#)[Industrial materials](#)[Consumer products](#)[Agricultural materials](#)[Construction & civil engineering materials](#)

Food packaging



Used as food packaging material.

Wrapping cloth



Used as wrapping cloth after printing, dyeing, and other processing.

Tape yarn (SULARIT™)



Used as tape yarn featuring unique designs and light weight after slitting.

Shoe materials



Used as shoe insoles and lining material.

Body warmers



Used as pouch material for disposable body warmers.

Tea bags



Used as tea bag material.

Dry cleaning garment covers



Used as dry cleaning garment covers.

[Contact us](#)[▲ Back to the top](#)

Infinite possibilities
ELTAS™

> Eltas Home

> What is Eltas ?

Applications

> Hygiene products

> Industrial materials

> Consumer products

> **Agricultural materials**

> Construction & civil engineering materials

The Eltas Performance series

> Waterproof

> Water-permeable

> Ultrafine-filament

> Bulky-filament

> High-uniformity

> Flat-filament

> Flexible

> Flame-resistant

> **Contact us**

Applications

Agricultural materials

Hygiene
products

Industrial
materials

Consumer
products

**Agricultural
materials**

Construction &
civil engineering
materials

Crop covers

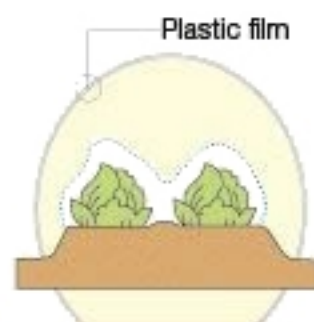


Providing excellent warmth retention in winter and suppressing temperature increases in summer

Open field



retainer



Greenhouse



Planting pots



Used in planting pots featuring superior air and water permeability

> **Contact us**

▲ [Back to the top](#)



> Eltas Home

> What is Eltas ?

Applications

> Hygiene products

> Industrial materials

> Consumer products

> Agricultural materials

> Construction & civil engineering materials

The Eltas Performance series

> Waterproof

> Water-permeable

> Ultrafine-filament

> Bulky-filament

> High-uniformity

> Flat-filament

> Flexible

> Flame-resistant

> Contact us

Applications



Hygiene products

Industrial materials

Consumer products

Agricultural materials

Construction & civil engineering materials

Roof underlayment



Used as structural core of asphalt roof underlayment

Soil stabilization mat



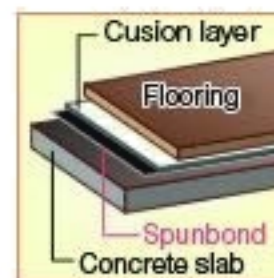
Used as soil stabilization mat to prevent erosion in civil engineering at bay inlets and elsewhere

Insulation panels



Used as protective surface on foam panels for thermal insulation

Flooring



Used as underlay in flooring systems
Noise-deadening flooring system
Cushion layer: PET staple fiber, polyurethane foam
Spunbond: to prevent bleeding of adhesive

Housewrap



Used as reinforcement in moisture-permeable waterproof films

> Contact us

▲ Back to the top



- > Eltas Home
- > What is Eltas ?

Applications

- > Hygiene products
- > Industrial materials
- > Consumer products
- > Construction & civil engineering materials
- > Agricultural materials

The Eltas Performance series

- > Waterproof
- > Water-permeable
- > Ultrafine-filament
- > Bulky-filament
- > High-uniformity
- > Flat-filament
- > Flexible
- > Flame-resistant

> Contact us

PDF

[Full Page] →

The Eltas™ Performance series

ELTAS GUARD. Waterproof	ELTAS AQUA. Water-permeable	ELTAS FINE. Ultrafine-filament	ELTAS CRIMP. Bulky-filament
ELTAS MASTER. High-uniformity	ELTAS FLAT. Flat-filament	ELTAS FLEX. Flexible	ELTAS FR. Flame-resistant

ELTASGUARD.
Waterproof

A high-barrier, waterproof SMS nonwoven



Waterproof

Material Features

- A high level of water resistance
- A very soft texture
- Excellent filament uniformity enabling reduced thickness

Typical Applications

- [Disposable diapers](#)
- [Sanitary napkins](#)
- Others

ELTASAQUA.
Water-permeable

A water-permeable nonwoven



Water-permeable

Material Features

- Superior instantaneous and repeated water permeability
- A soft texture
- High strength thanks to even filament distribution
- Better strength than staple-fiber nonwovens

Typical Applications

- [Disposable diapers](#)
- [Sanitary napkins](#)
- Others

ELTASFINE.
Ultrafine-filament

A soft-texture ultrafine-filament nonwoven



Ultrafine-filament

Material Features

- Use of ultrafine filaments to enable thinner fabric
- A very soft texture
- Excellent filament uniformity enabling ultrafine structure
- High water resistance

Typical Applications

- [Disposable diapers](#)
- [Sanitary napkins](#)
- Others

Comparison of filament thickness



ELTASFINE.



with our regular product

ELTASCRIMP.
Bulky-filament

A bulky nonwoven made of crimped filaments



Bulky-filament

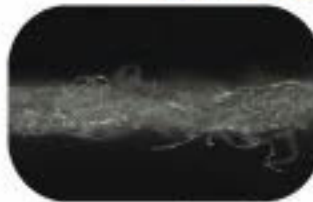
Material Features

- Made of crimped and modified cross-section filaments
- Large openings between filaments provide high bulk

Typical Applications

- Paper wipers
- [Food packaging materials](#)
- [Oil adsorbents](#)
- [Filters](#)

Comparison of bulkiness



ELTASCRIMP.



with our regular product

▲ [Back to the top](#)

▲ [Back to the top](#)

ELTASMASTER™ High-uniformity nonwoven



High-uniformity

Material Features

- High uniformity and fineness even in thin fabric
- Even filament distribution with minimal weight variegation

Typical Applications

- [Packaging materials](#)
- [Garment bags](#)
- [Filters](#)
- Others

ELTASFLAT™ Superiority in smoothness to special flat filaments nonwoven



Flat-filament

Material Features

- Produced from special flat cross section filaments
- Thin but strong
- Superior smoothness enabling clear reproduction of printed patterns

Typical Applications

- [Industrial materials](#)
- [Packaging materials](#)
- [Tape materials](#)
- Others

Comparison of filament cross-sections



ELTASFLAT.



with our regular product

[▲ Back to the top](#)

ELTASFLEX™ A stretch nonwoven with highly extensible



Flexible

Material Features

- Highly extensible and excellent processability
- Soft texture with good drape
- Superior strength and workability

Typical Applications

- [Automotive materials](#)
- [Shoe materials](#)
- [Packaging materials](#)
- Others

Comparison in formability



ELTASFLEX.



with our regular product

ELTASFR™ (flame-retardant) A flame retardant nonwoven



Flame-resistant

Material Features

- Phosphorus-based flame retardant blended into the filaments
- Longer lasting flame-retardant performance than with postprocess techniques

Typical Applications

- [Industrial materials](#)
- [Packaging materials](#)
- [Tape materials](#)
- Others

[▶ Contact us](#)

[▲ Back to the top](#)