



SOLVAY

asking more from chemistry®



EPICEROL®

SUSTAINABILITY BEGINS AT THE SOURCE



AGRICULTURE



GLYCERINE

EPICEROL®
PROCESS



OIL DRILLING



PROPYLENE

CLASSIC
PROCESS



EPICHLOROHYDRIN (ECH)

Epicerol® is a drop-in for fossil-based ECH

Epicerol® Most sustainable ECH for CO₂ reduction

Epicerol® is biobased epichlorohydrin (ECH) produced using Solvay's proprietary process based on glycerol. Glycerol is a renewable feedstock and a by-product of biodiesel and oleochemicals production.

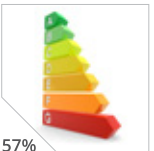
Epicerol® offers significant environmental advantages compared to fossil-based ECH from propylene.



Renewable carbon



Reduction in Global Warming Potential (GWP)



Less energy consumption

Epicerol® process advantages include:



Lower water and chlorine input



Minimal water effluent and chlorinated by-products

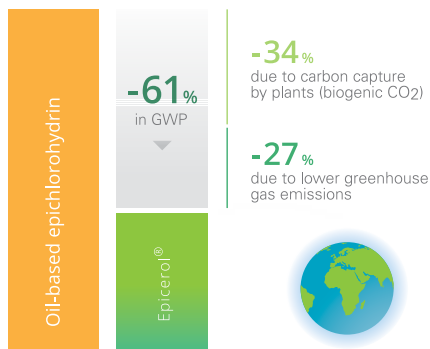


Reach your environmental goals with Epicerol®

By choosing Epicerol® over propylene-based ECH, downstream users reduce the impact raw materials have on their end-products' carbon footprint.

Solvay's comparative Life Cycle Analysis (LCA) on Epicerol® and propylene-based ECH confirms the environmental benefits of Epicerol®.

This cradle-to-gate assessment was audited and validated by DEKRA, a leading certification body in environmental management.



Incorporating 1 MT of Epicerol® instead of propylene-based ECH reduces your product's carbon footprint by 2.56 MT CO₂ equivalent.

A biobased building block for a broad range of industries

Epicerol® is a chemical intermediate mainly used in the production of epoxy resins.

Epoxy applications include:

- Paints and coatings
- Composites
- Electronic components
- Adhesives

Non-epoxy applications include:

- Paper chemicals
- Water treatment
- Surfactants





**ADVANCED BIOCHEMICAL
(THAILAND) CO., LTD.**

Bangkok Office

14th floor Green Tower, 3656/41 Rama IV Road
Khwang Klongton, Khet Klongtoey, Bangkok 10110, Thailand
Tel: +66-2229-9100
Fax: +66-2240-1383, +66-2240-1386

Head Office and Plant

No. 2/1, 1-3 Road, Map Ta Phut Industrial Estate
Tambol Map Ta Phut, Amphoe Mueang
Rayong Province 21150, Thailand
Tel: +66-3892-5000
Fax: +66-3868-3048

Contact:
epicerol-contact@solvay.com



**ADVANCED BIOCHEMICAL
(THAILAND) CO., LTD**

www.solvay.com

EPICEROL[®]
SUSTAINABILITY BEGINS AT THE SOURCE

Epicerol[®] is market-competitive biobased ECH, which is more sustainable in terms of CO₂ emissions and environmental performance of the process.

For a renewable solution with a lower carbon footprint, contact Solvay for a tailor-made quote. Solvay has local sales teams that understand your business needs.

Epicerol[®] is produced by ADVANCED BIOCHEMICAL (THAILAND) CO., LTD. (ABT), using the innovative process developed and patented by Solvay.

ABT have operated their world-class manufacturing unit in Map Ta Phut since February 2012. ABT is wholly-owned by Vinythai Public Company Limited, which is recognized for its strong sustainability and social responsibility commitment.